

# CartoPac Field Solutions for Municipalities & Utilities

## Your Fastest Path to Guaranteed Results

CartoPac Field Solutions, powered by Spatial Data Technologies, Inc., is a world leader in mobile field data collection. CartoPac Field Solutions provides fully integrated mobile solutions for municipalities, public works, rural utilities and other infrastructure-based organizations.



CartoPac's Municipal & Utility solutions deliver complete field data collection tools for a variety of needs, including:

- Asset management
- Asset verification
- Electric (as built)
- Water/wastewater
- and many more
- Inspection reports
- Tree mapping
- Roads & bridges
- Emergency management

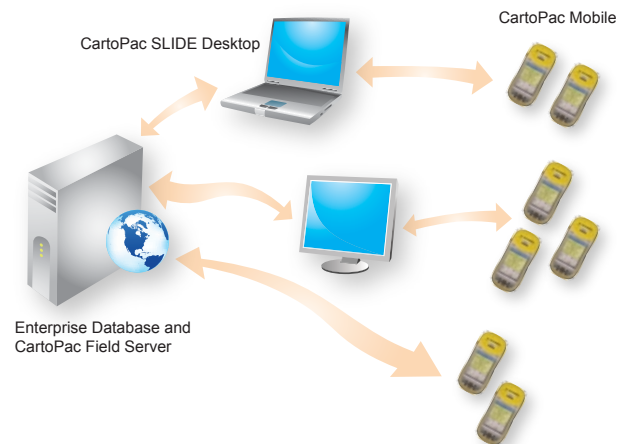
Clients value CartoPac solutions as a direct reflection of steps naturally taken to get the job done. Survey results show field users find CartoPac applications easy to use and easy to implement in their day-to-day operations. And by using the Intelligent forms there is high data integrity, fieldwork efficiency and greatly increased time and cost savings.

## CartoPac Enterprise Suite of Technologies

The CartoPac suite supports custom and standard data models, such as ESRI, ArcFM, and Origin data models. **CartoPac Field Solutions support many industry data models.** As a result, CartoPac was the first to deliver relational database support in the field.

### Highlights:

- Greater work crew flexibility
- Automated GPS postprocessing to save valuable office time
- Simple to administrate
- Eliminates paper forms
- No GIS background required for users
- Vector & raster processing tools for handling large data files



## CartoPac Field Server

Our CartoPac Field Server enables users to synchronize data via any computer with an internet connection. The web interface also provides direct postprocessing of GPS data. The CartoPac Field Server is easily configured, easily managed, easily maintained and can easily adapt to fit your changing needs. More importantly, users can utilize an existing ArcGIS technology or use CartoPac Field Server as a stand-alone system.





## CartoPac Data Interchange for ArcGIS (CDI)

CDI for ArcGIS benefits customers whose project requires repeated asset data collection. The CDI toolbar extension allows you to develop an all-inclusive work flow that streamlines the entire data collection process and supports the QA/QC process. ArcGIS users will find CDI the most integrated field data collection tool on the market today. Furthermore, GPS postprocessing is all handled from an ArcMap interface so users never need to open another application to manage their field data collection project. CDI allows users to utilize any ArcGIS-compatible data format—SDE, PGDB, File GDB, SHP, or raster data—without the complication of time-consuming data conversion.

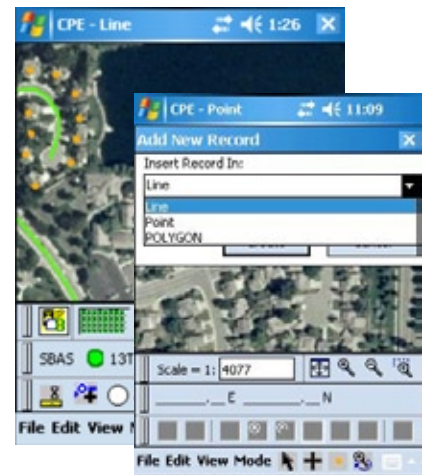


### CartoPac Mobile®

The CartoPac Mobile integrated solution ties your customized solutions together. CartoPac Mobile has no vertical limitations—it can be used and customized for multiple projects with different objectives. CartoPac Mobile is customized to follow your natural data collection process and customers consistently say they find CartoPac Mobile easy to use and easy to implement in their day-to-day operations. CartoPac's patented, high-speed raster/vector engine empowers users to carry tens of gigabytes of imagery and view large data layers on handhelds without compromising speed.

### CartoPac ToolKit®

The CartoPac ToolKit puts the power of customization in your hands and allows you to tailor templates, forms and reports to deliver precisely what field crews need while collecting the information that office personnel require. Use the CartoPac Toolkit if you need to build your own mobile solution and utilize multiple applications.



## About CartoPac Field Solutions

Since 1999, CartoPac Field Solutions, powered by Spatial Data Technologies, Inc., has had a singular focus on field data collection; providing integrated mobile solutions to companies large and small.

CartoPac Field Solutions is a Trimble and ESRI Business Partner.

